



Hillside Cottage North Church Street, Bakewell, DE45 1DB



Hillside Cottage North Church Street

£360,000

Occupying an enviable position close to the heart of Bakewell and enjoying attractive views towards the historic church, this charming Grade II listed mid terrace stone-built cottage offers characterful accommodation arranged over three floors.

Bakewell is one of the Peak District's most sought-after market towns, renowned for its historic charm, vibrant community and excellent range of amenities including independent shops, cafés, restaurants and everyday services, all within easy walking distance of the property. Surrounded by beautiful countryside and with excellent access to riverside walks and the wider Peak District National Park, the location perfectly combines convenience with lifestyle appeal.

The property retains a wealth of traditional charm and character throughout. A pretty living room features a bay window overlooking the street together with an attractive fireplace creating a warm and welcoming focal point. To the rear, the fitted kitchen provides a range of units and offers access to the enclosed rear courtyard, ideal for outdoor seating.

A useful cellar beneath the property provides additional storage.

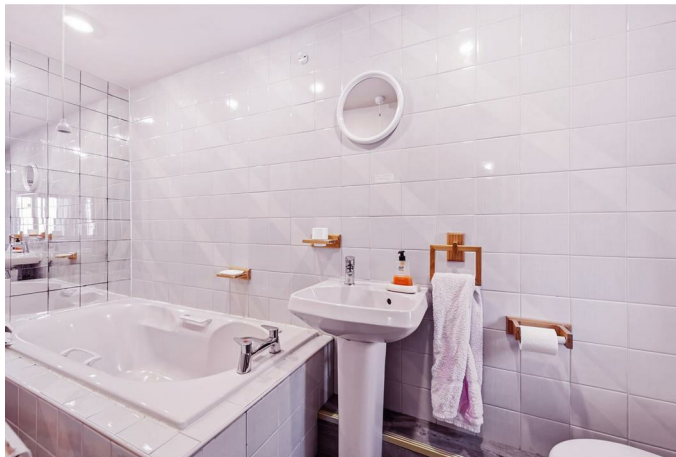
To the first floor there is a double bedroom and a bathroom, while the second floor provides two further bedrooms, offering flexible accommodation suitable for a variety of purchasers.

Offered for sale with no upward chain, this delightful cottage presents an excellent opportunity to acquire a traditional home in one of the Peak District's most desirable and well connected market towns.

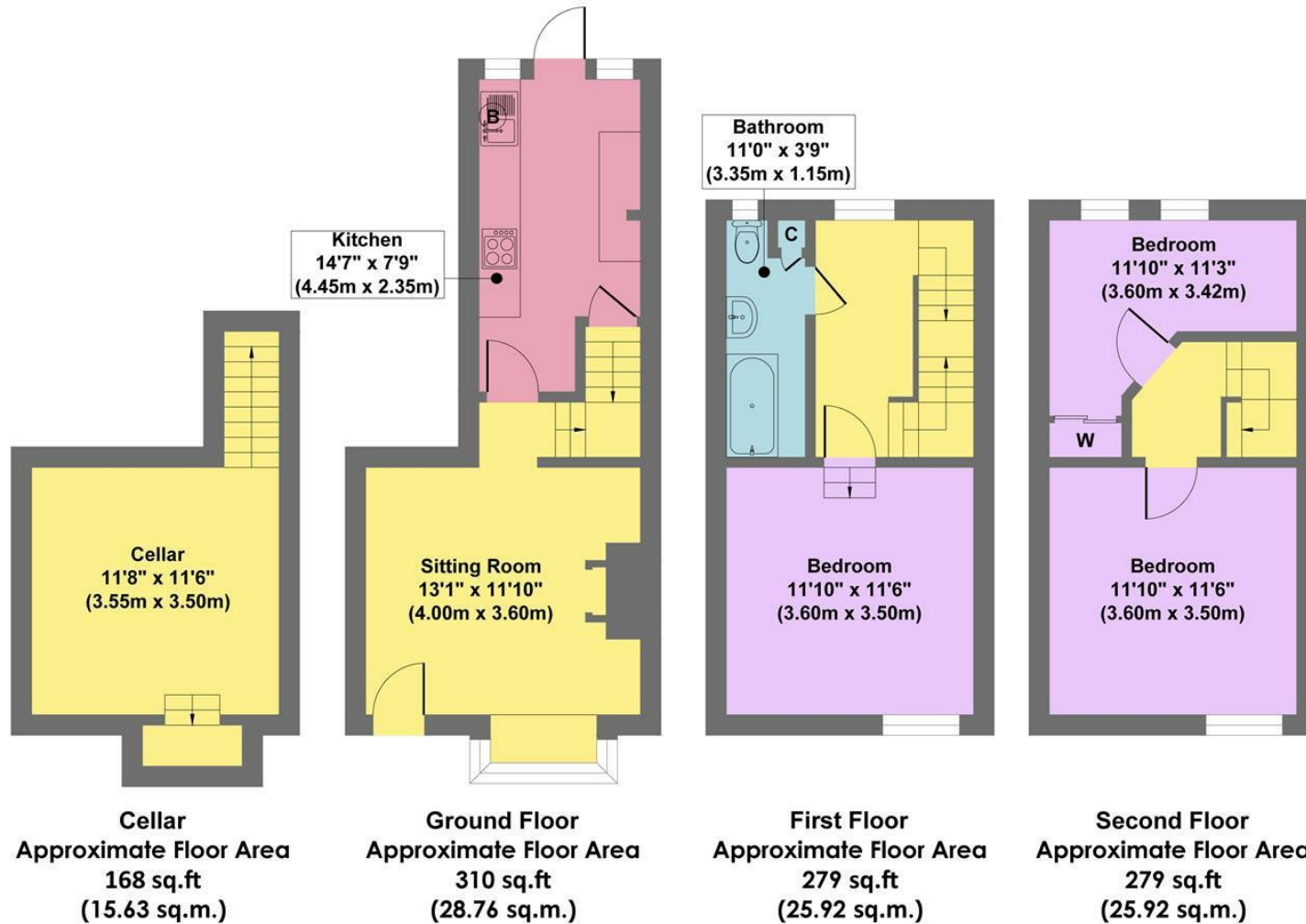


- Grade II Listed
- Easily Managed Rear Courtyard
- Easy Reach Of Town Centre Amenities
- Traditional Features
- Overlooking The Historic Church
- Accommodation Set Over Three floors
- Additional Cellar
- Direct Access To Many Local Walks
- No Upward Chain
- Viewings: Bakewell Office





Hillside Cottage



Approx. Gross Internal Floor Area 1036 sq.ft / 96.23 sq.m

Illustration for identification purposes only. Measurements are approximate, not to scale

While we endeavour to make our sales particulars fair, accurate and reliable, they are only a general guide to the property and, accordingly, if there is any point, which is of particular importance to you, please contact the relevant office. The Agents have not tested any apparatus, equipment, fittings or services and so cannot verify they are in working order. The buyer is advised to obtain verification. Please note all the measurement details are approximate and should not be relied upon as exact. All plans, floor plans and maps are for guidance purposes only and are not to scale. Under no circumstances should they be relied upon as exact or for use in planning carpets and other such fixtures, fittings or furnishings. YOUR HOME IS AT RISK IF YOU DO NOT KEEP UP REPAYMENTS ON A MORTGAGE OR OTHER LOAN SECURED ON IT. 'A Life Assurance policy may be requested.' 'Written Quotations of credit terms available on request.'

Banner Cross
T: 0114 268 3241
E: bannercross@saxtonmee.co.uk
www.saxtonmee.co.uk

Hathersage
T: 01433 650009
E: hathersage@saxtonmee.co.uk

Bakewell
T: 01629 815307
E: bakewell@saxtonmee.co.uk

Matlock
T: 01629 828250
E: matlock@saxtonmee.co.uk

